

Features

- For LED Outdoor & Industrial Application
- High Reliability & Long Life 50,000hrs
- Built-in PFC Function
- Ultra-high Efficiency: up to 91.5%
- Wide Input Range for Worldwide use (up to 305Vac)
- IP67 Design for Outdoor Installations
- All-round protection: OVP, OTP, SCP
- 100% Burn-in Test
- Safety: Meet IEC61347-2-13, UL8750 & EMI EN55015



IP67 CE SELV 

SPECIFICATION

Model Name		MCH-75-350	MCH-75-700	MCH-75-1050	MCH-75-1400	MCH-75-2100	MCH-80-2300	MCH-75-2500	MCH-75-2800	MCH-75-3150	
Output	Rated Power	75W	75W	75W	75W	75W	83W	75W	75W	75W	
	Output Voltage	159~214V	54~108V	36~72V	27~54V	18~36V	18~36V	15~30V	13~26V	12~24V	
	Rated Current	350mA	700mA	1050mA	1400mA	2100mA	2300mA	2500mA	2800mA	3150mA	
	Output Ripple Current	±5%	±5%	±5%	±5%	±5%	±5%	±5%	±5%	±5%	
Input	Input Voltage/ Frequency	120~277Vac / 47~63Hz									
	Power Factor (typ.)	PF ≥ 0.92 / 230Vac @ full load, 230Vac / 50Hz and rated output voltage									
	Efficiency (typ.)	91.5%	90.5%	90.5%	90.0%	89.0%	89.0%	88.5%	88.0%	88.5%	
	Inrush Current (typ.)	75A max. @ full load 230Vac / 50Hz, cold start									
	Leakage Current	≤ 0.75mA / 277Vac									
Environment	Operating Temperature	-40°C~ +70°C (refer to de-rating curve)									
	Operating Humidity	0~100%RH									
	Storage Temperature, Humidity	0~100%RH									
Protection	Over Voltage Protection	250V	150V	100V	68V	50V	50V	50V	50V	35V	
	Other Protections	OTP; SCP									
Safety & EMC	Safety Standards	EN61347-1, EN61347-2-13									
	EMC Standard	Compliant with EN55015 / EN55022 / CISPR22 CLASS B, Compliant with EN6750-3-2 Class C (≥ 60% load) EN6750-3-3, Compliant with EN6750-4-2, 3, 4, 5, 6, 8, 11									
	Pulsation Level	5%	5%	5%	5%	5%	5%	5%	5%	5%	
	Surge Voltage	Differential Mode ≥ 3KV; Common Mode ≥ 6KV									
	Withstand Voltage (Hipot)	I/P-O/P 3750Vac, I/P-FG 1875Vac									
	Isolation Resistance	I/P-O/P I/P-FG: 100M ohm @ 500Vdc									
Others	Life Time	50000hrs									
	MTBF	200khrs									
	Dimension (LxWxH)	134 x 68 x 42.5mm without bracket, 160 x 68 x 42.5mm with bracket									
	Net Weight / Packing	0.7kg; 16 pcs / box									

Notes:

1. Data at full load and rated voltage, 230Vac/50Hz input, and 25°C ambient temperature unless otherwise specified.
2. Measurement at 20MHz bandwidth oscilloscope (Rated input and rated output)
3. The input voltage information on the label should be marked ±10% less than the original input voltage, to conform with safety regulations.
4. The power supply is considered as a component that will be operated in combination with final equipment. Since EMC performance will be affected by the complete installation, the final luminary manufacturers must re-qualify EMC Directive on the complete installation again.



FSP TECHNOLOGY INC. (Russia Office)

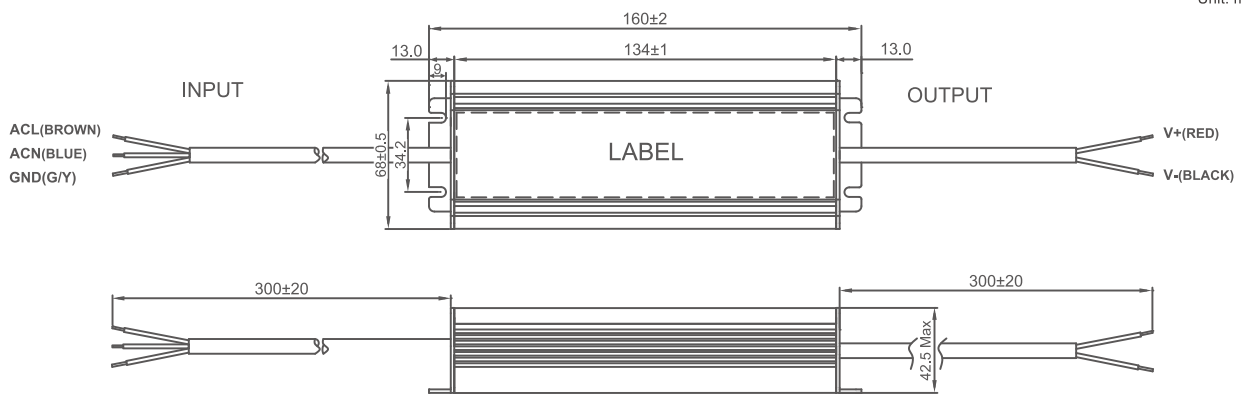
www.fsp-power.ru / rusupport@fsp-power.ru

119571 Moscow, Akademika Anokhina str. 5/3 office 69

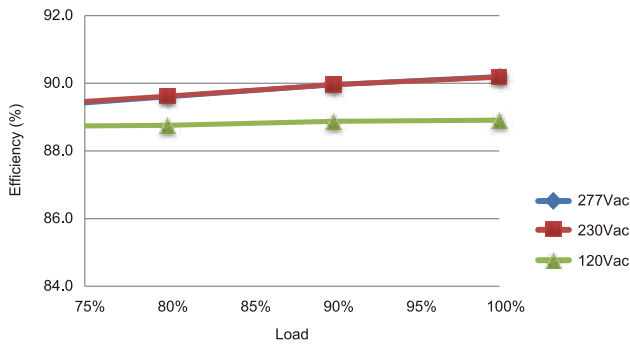
TEL/ FAX : +7(499)730 44 10



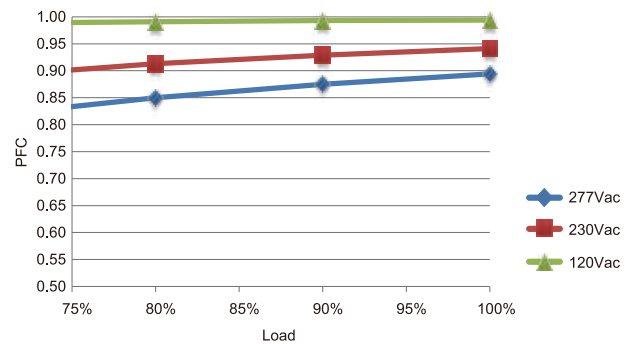
Unit: mm



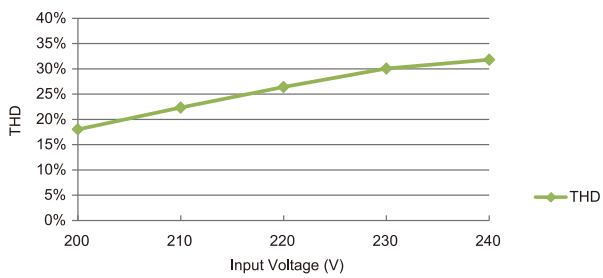
Efficiency



PFC vs Loading



THD vs Input Voltage



Derating Curve

